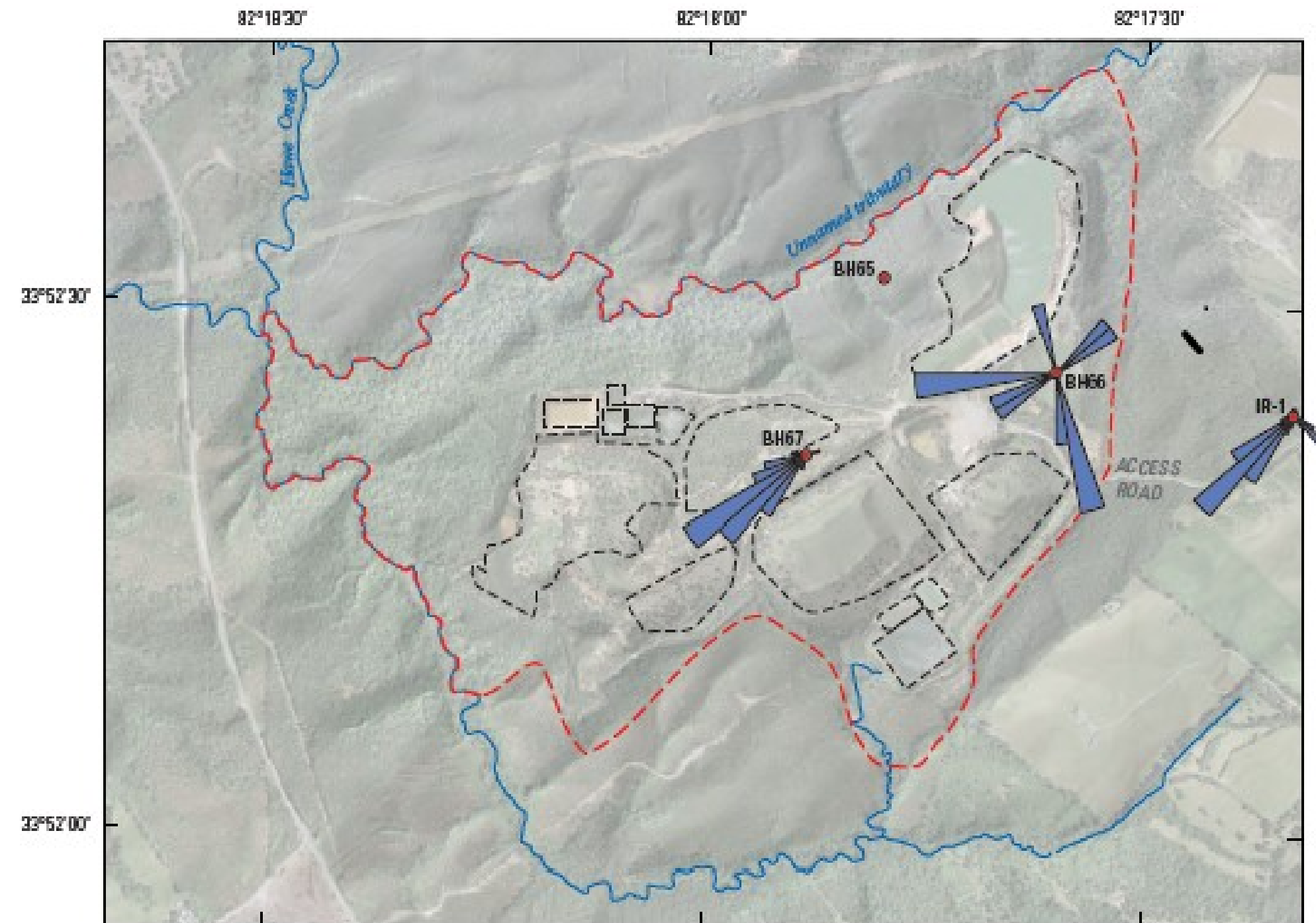
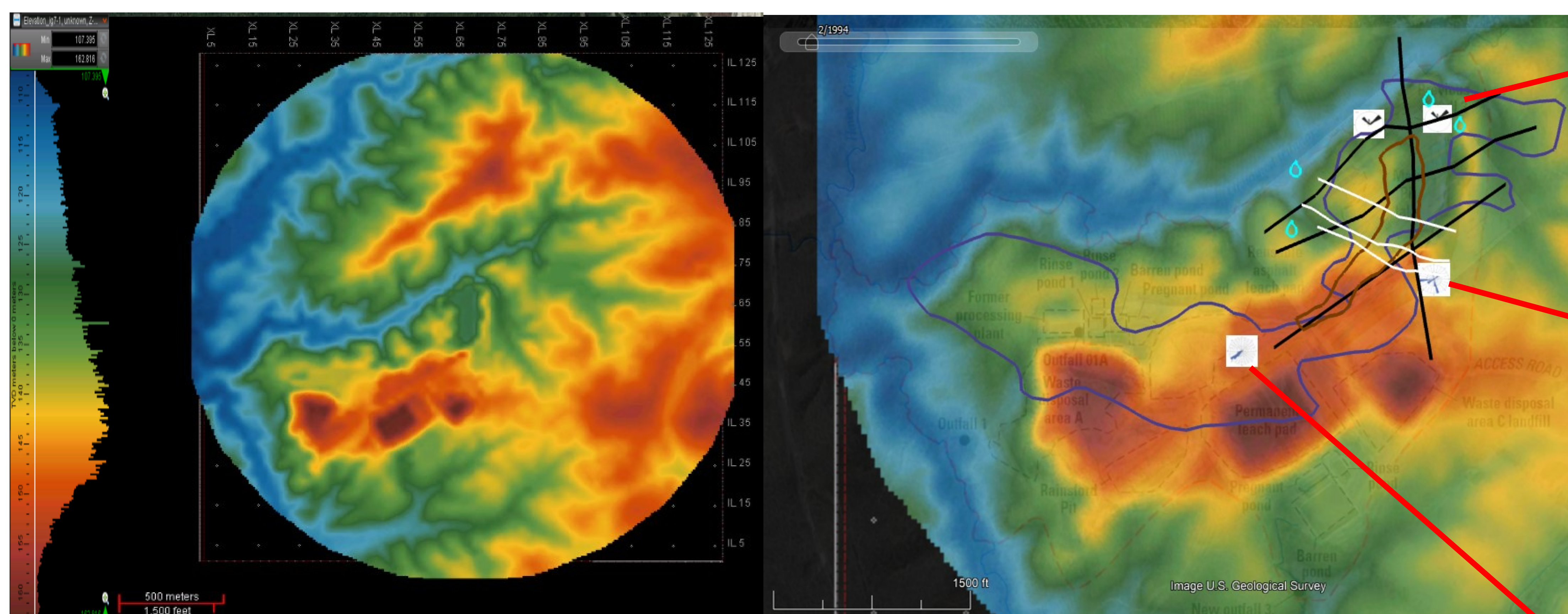


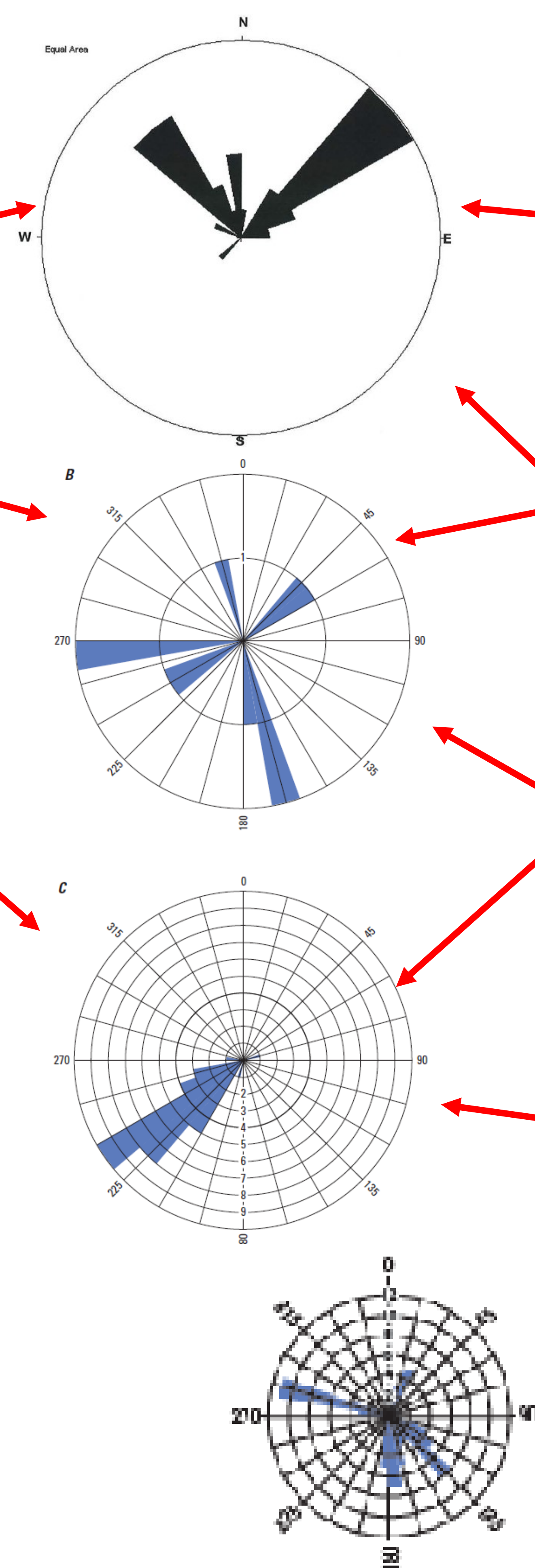
Elevation over Study Area - Red= High 163m Blue=Low 107m



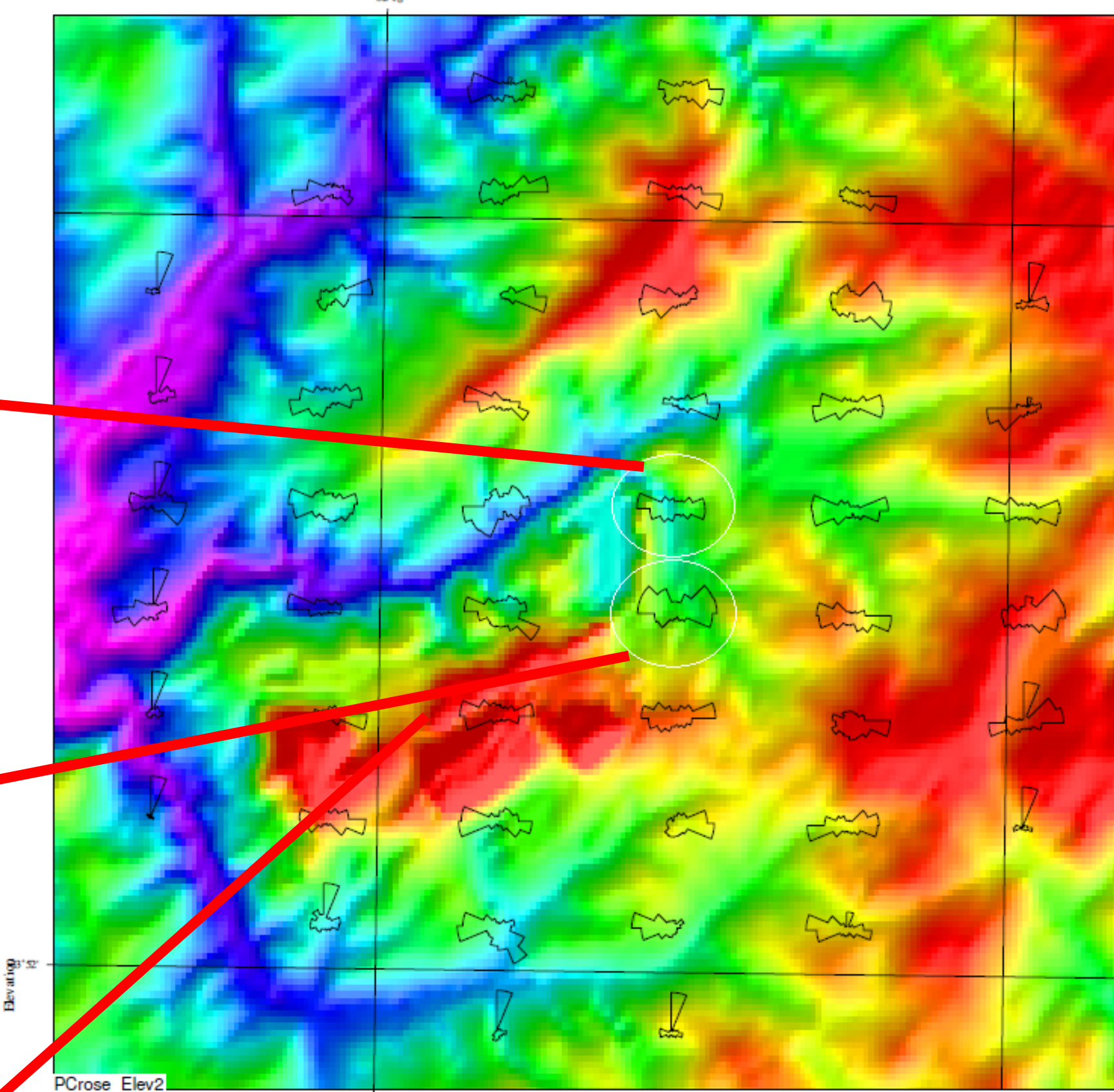
Index of Rose Diagrams by well



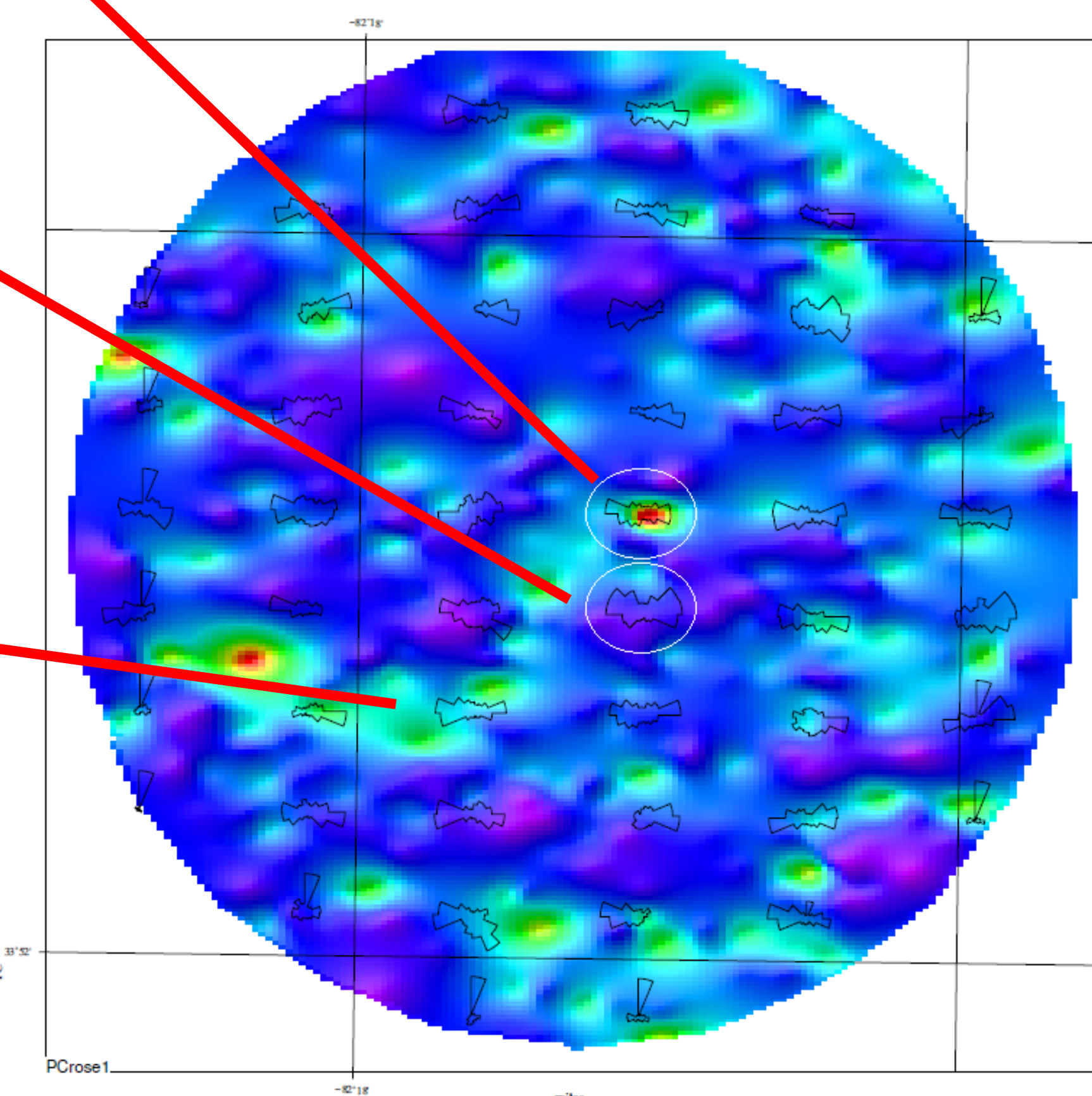
PC outline over Barite Hill mine features map



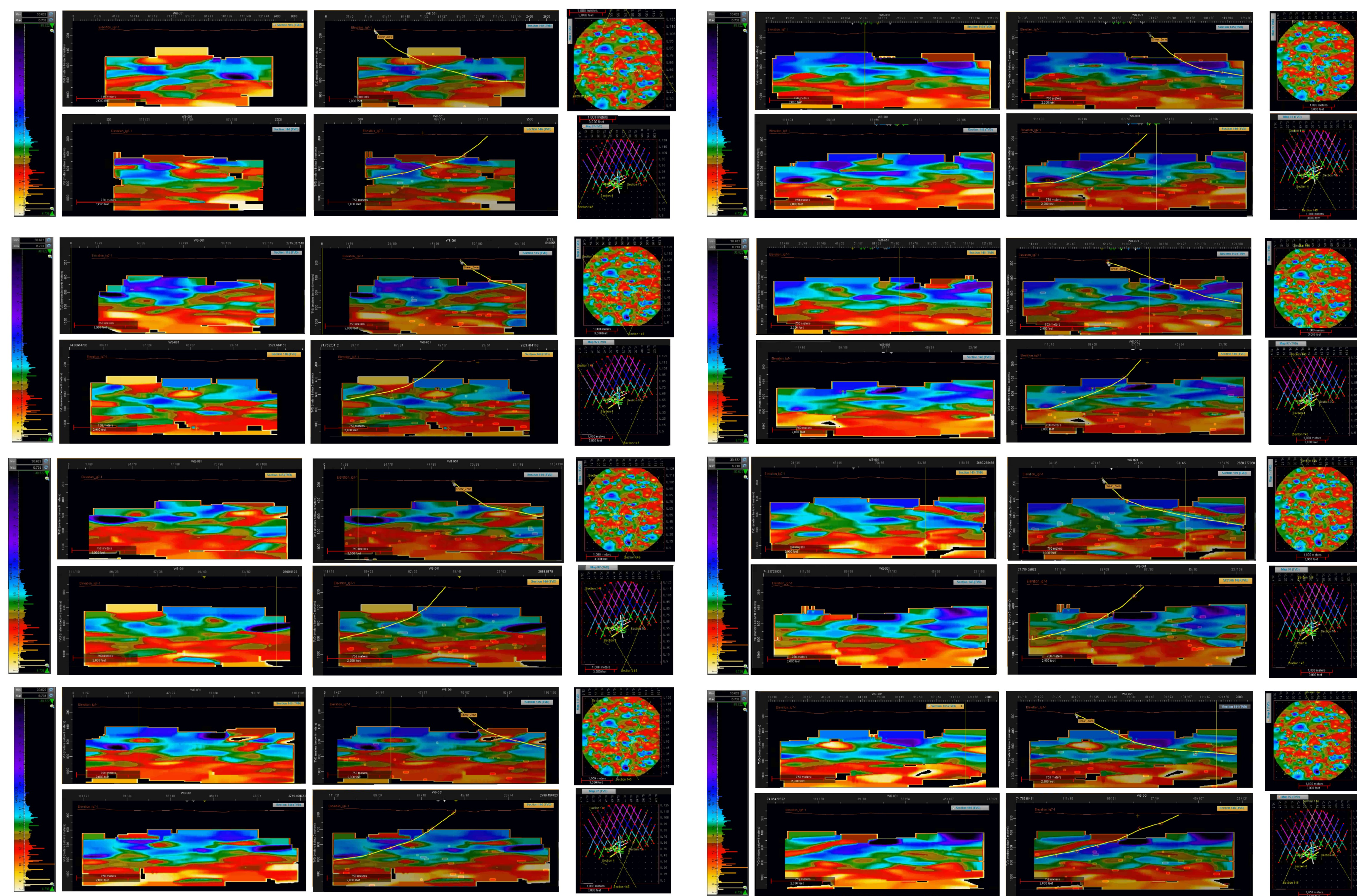
Composite Rose Diagram from USGS



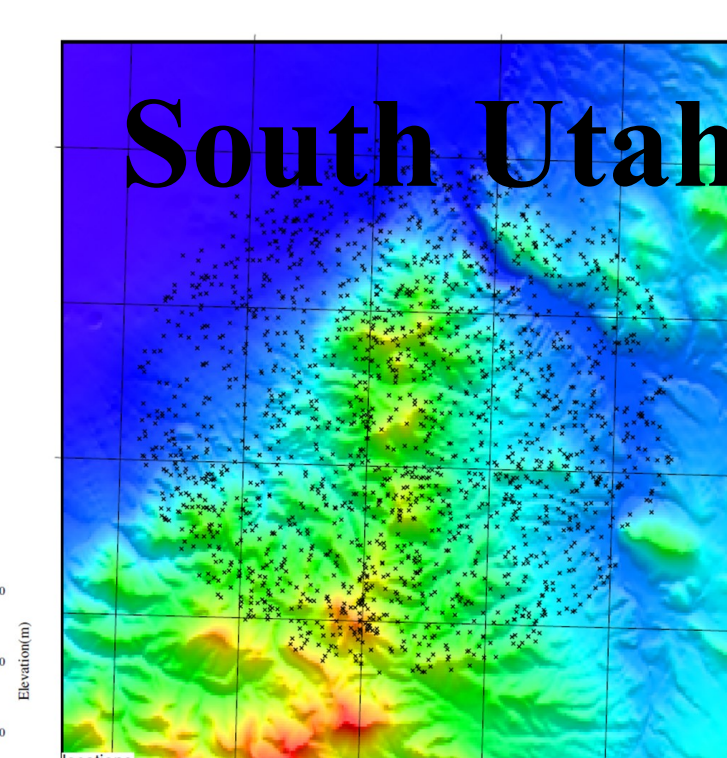
Rose Diagrams automatically calculated from Peak Current (PC) Lightning Attribute Map



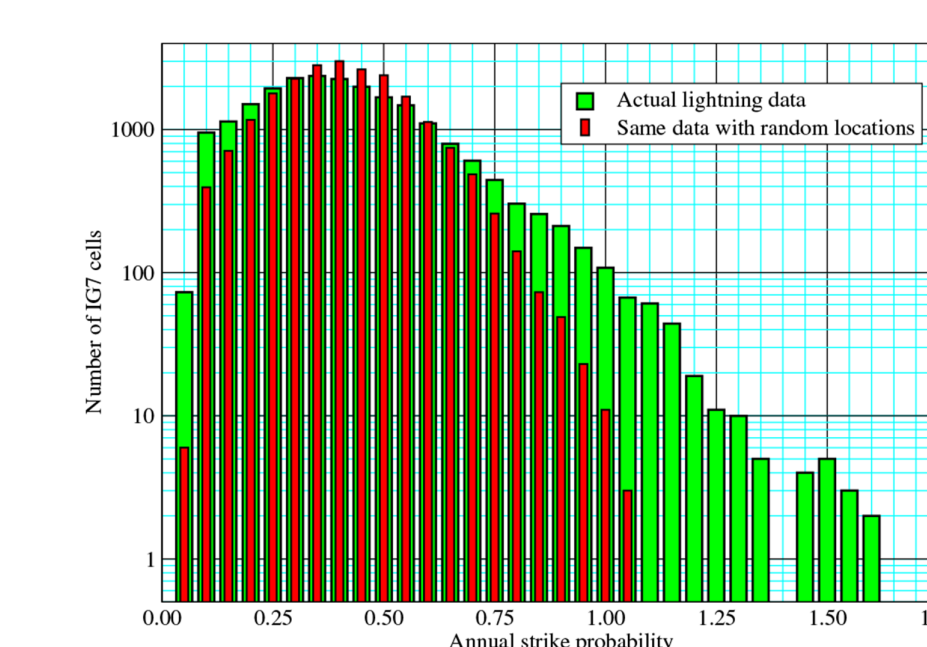
Apparent Resistivity Cross Sections with Shear Fault Interpretation



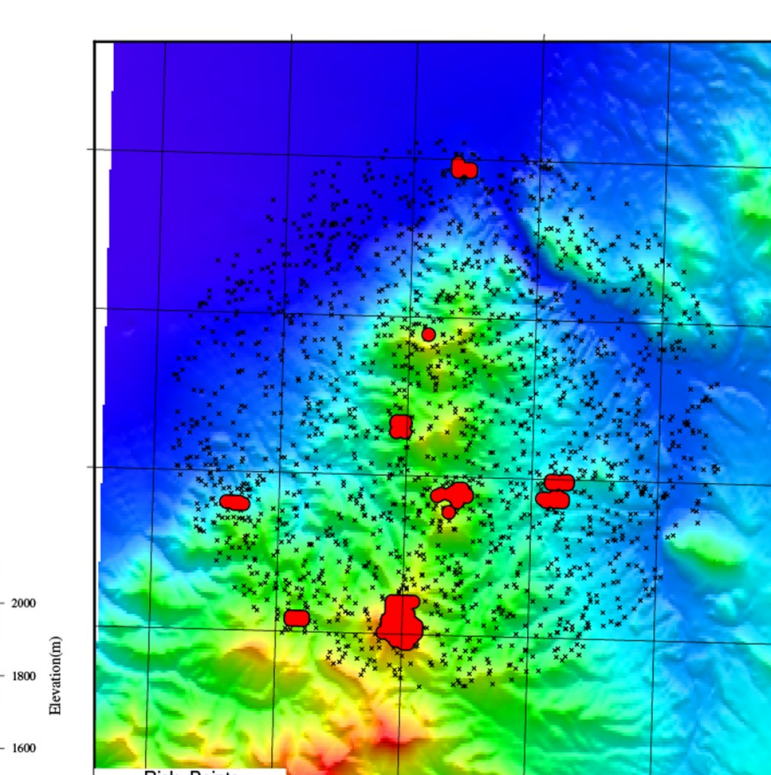
South Utah Lightning Analysis



South Utah Strikes



South Utah Strikes
Green Bars - Raw Data
Red Bars - Random Locations



Risk Points calculated from historical lightning strikes, in this area > 1 strike / year

